

UTAS Multifocal/Pattern System

The most comprehensive system for testing of the retina, optic nerve, and visual cortex





SIMPLE TO USE

Automatic cursor placement

Small footprint & portable

A simple user interface with powerful testing/reporting features

Incorporates a high quality LCD monitor carefully selected and driven in a manner to clinically eliminate flash artifacts

Real-time calibration of the LCD monitor delivers consistent quality throughout testing

Reliable Ultra Low-Noise Digital Amplifier (UBA) makes downstream noise coupling impossible. No need for shielding and separate grounding

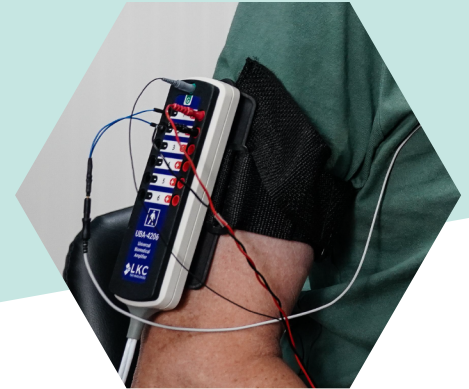


VERSATILE

Widest range of fully ISCEV* compliant multifocal ERG/VEP and pattern ERG/VEP test stimuli and reports

Export PDF for electronic medical reports, or raw data (.CSV format) for research purposes

*International Society for Clinical Electrophysiology of Vision



MULTIFOCAL TESTING

Multifocal testing using long m-sequences and sophisticated artifact rejection methods provide clean waveform results

Multifocal signal processing redesigned incorporating Erich Sutter's published methods to allow for consistent comparisons and system migration path

mfERG

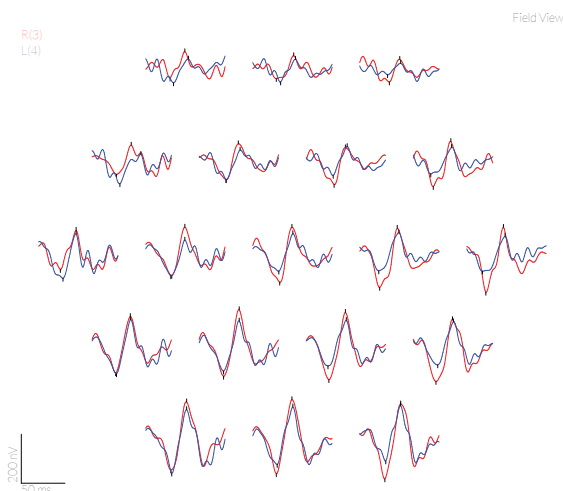
Stimulus Types: 19, 61, 103, 241 hexagons

Report types: Trace Arrays, Amplitude & Time, 3D plot, and Region/Ring Ratios

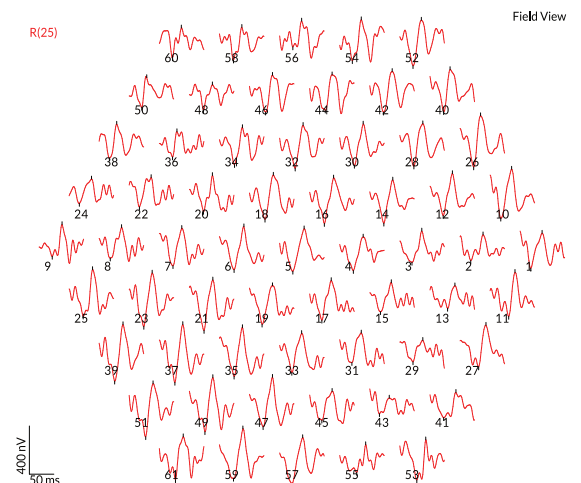
Multi-channel recording with automatic selection for best channel

Average multiple tracings for improved noise

mfERG 19-hex Trace Array



mfERG 61-hex Trace Array

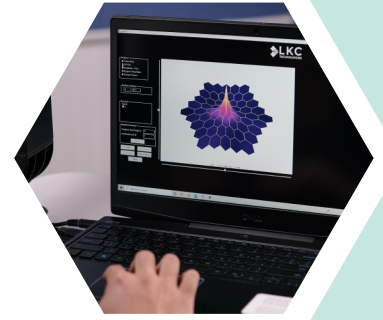


mfVEP:

Stimulus types: 4, 16, or 60 wedges with pattern reversal or onset presentation

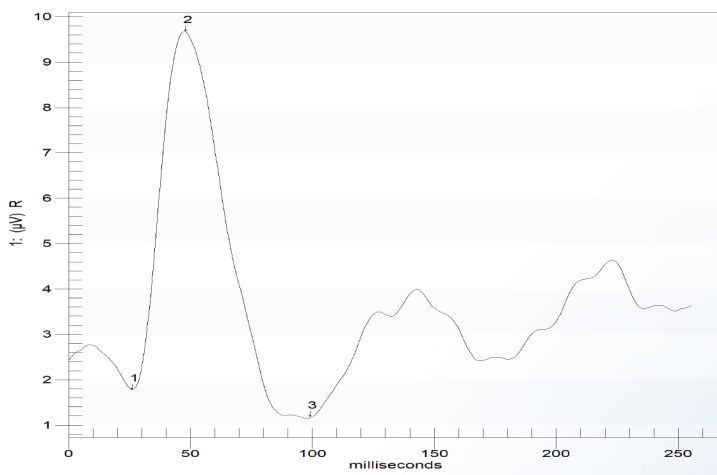
Report types:

- Trace Array
- Overlapped interocular comparison
- Regional average waveform display



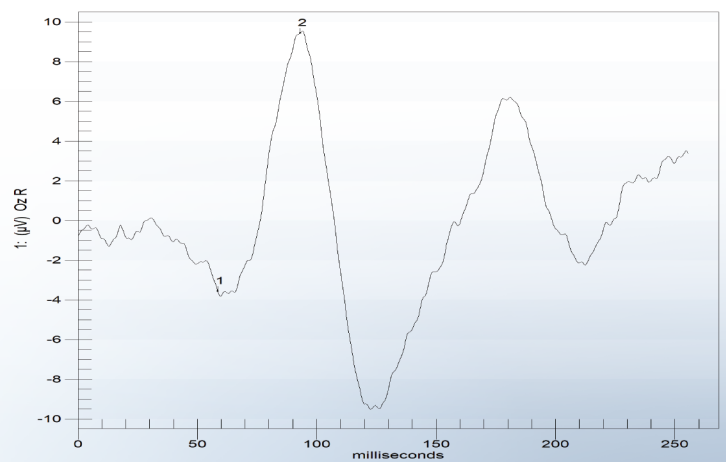
PERG

- Bilateral testing capable
- Custom protocols available



PVEP

- Bilateral testing capable
- Custom protocols available





USE ANY ELECTRODE

Any type of electrode can be used with the UTAS Multifocal system, including LKC's non-invasive sensor strip electrodes

COMPACT

Small footprint (24" x 26") portable cart with retractable integral chin rest, mounting for all system components, and locking 4" casters for ease of movement



The UTAS Multifocal system can be combined with the RETeval® handheld device to create a full ERG/VEP system

